



CartManager[®] Ultra

Quick Start Guide V2.1



Pushout
Prevention



Cart
Retention



Cart
Management

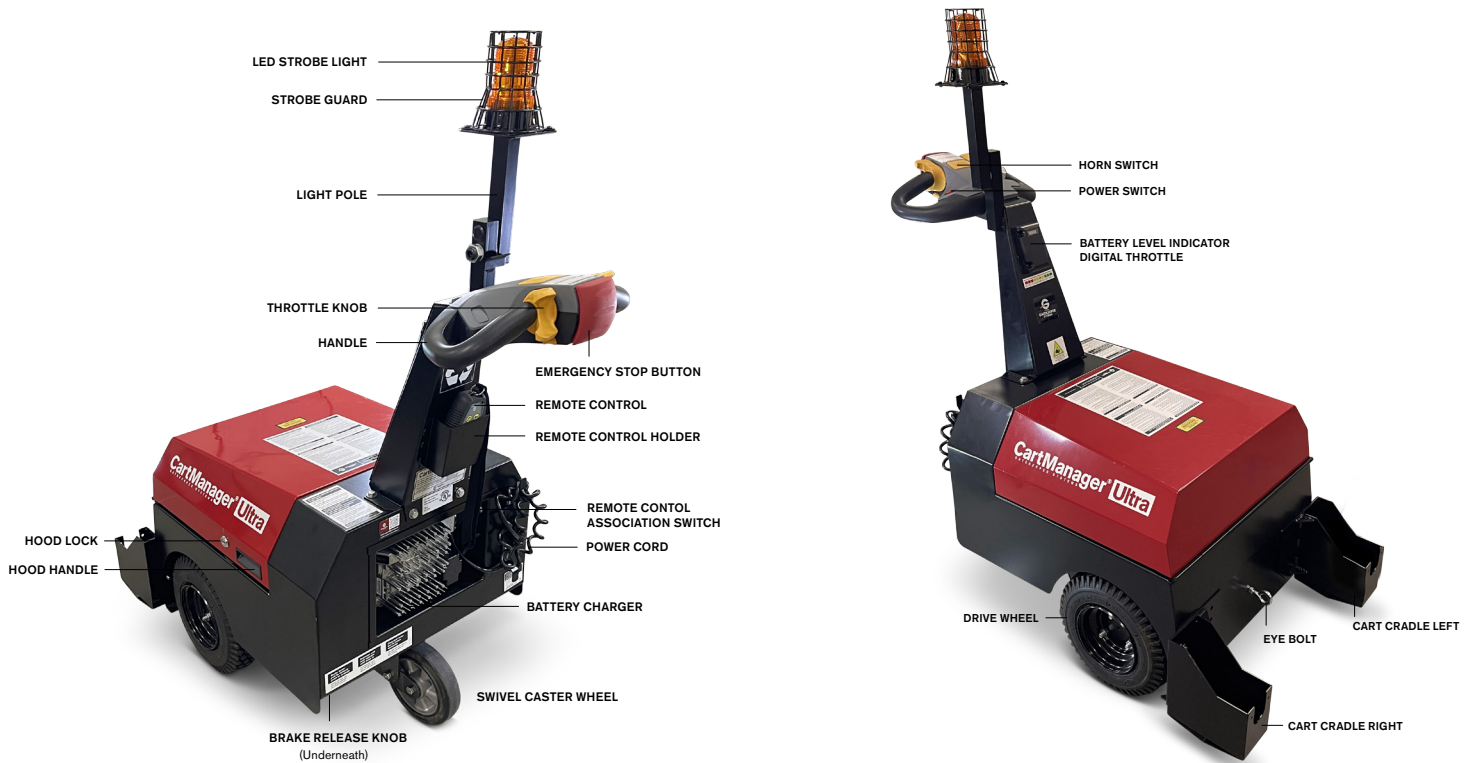


Business
Intelligence

1

Familiarize yourself with the CartManager Ultra.

(Shown fully assembled, front & rear views)



2

The CartManager Ultra will come in one (or two) boxes.

Make sure the shipping pallet under the CartManager Ultra is securely placed on a large flat, dry, and level surface. Cut and discard all bands and any other straps securing the CartManager Ultra to the pallet.



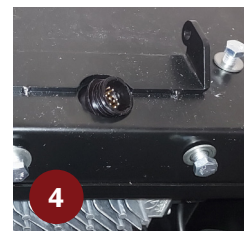
3

Lay the neck assembly down on the top of the CartManager Ultra so the bottom is near the end of the cart.



4

Pull the connector through the hole. Remove the 4 bolts that secure the Neck Assembly to the frame.



5

Connect the two ends of the connector, one from the neck assembly and one in the base.



6

Press the two connectors together and twist until the tabs fit into the slots and the male end slides into the female end.

Turn and thread locking sleeve over the connector to secure the two ends.



7

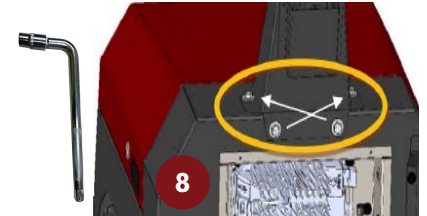
Remove the four screws (three of which are shown in illustration 4), then lift, and place the neck assembly into its full, upright position and align the four holes.

Place four bolts into holes and hand tighten.



8

Tighten the four neck mounting screws in cross pattern as shown *using enclosed wrench*, securing the neck assembly to the frame.



9

Release the brake by pulling the brake release lever out under the CartManager Ultra near the swivel caster wheel at the lower-left rear corner.



10

Remove any wooden blocks around the wheels of the CartManager.

Pull the CartManager backwards off the pallet, keeping your feet clear of the wheels. This task may require two people.



11

Now that the CartManager Ultra unit is on the ground, engage the brake by pushing the brake release lever in. (Shown in image 9)

12

Turn power switch to the ON position (so the I is in the down position).

13

Press green button on remote and the LED scrolling on the battery level indicator will stop and display the battery charge level.

A maximum of ten bars may be displayed, each representing 10% of full battery charge. NOTE: If the LEDs continue to scroll after the green button is pressed, the remote is not associated with the CartManager Ultra. Refer to the back of the remote or the User Guide to associate remote control with CartManager Ultra.



14

By grasping both the handles with your hands and placing your thumbs onto the throttle knobs, slowly rotate the throttle knobs in a forward direction to move the CartManager Ultra forwards, by rotating the throttle knobs in a backwards direction it will move the CartManager Ultra in a backwards motion.

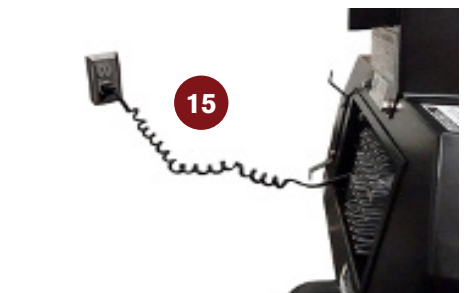
The farther you rotate the throttle knobs, the faster the unit will move. Release the throttle knob and the CartManager Ultra will stop.



15

Move CartManager Ultra to a level, clean and dry area within five feet of an electrical outlet.

Unwrap the power cord from the back of the unit and plug in to a standard three-prong grounded outlet. DO NOT use an extension cord. DO NOT use ungrounded two prong outlets or two-prong plug adapters that bypass the grounding prong or two prong electrical outlets.



16

Once charging begins, turn the Power switch to the OFF position. "O" is OFF and "I" is ON.



17

Once plugged in:

- Blue AC Power indicator will illuminate
- Yellow lightning bolt will illuminate
- Green battery level will flash and once charged 100%, the green battery will stop flashing and become solid.

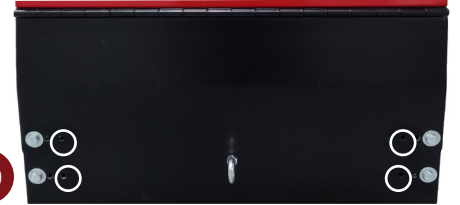


18

During this initial charge, leave the CartManager Ultra plugged in for eight hours before using for training or cart collection.

NOTE: After 24 hours the charger automatically turns off and a Green light is illuminated to indicate the battery is in long term maintenance mode.

19



19

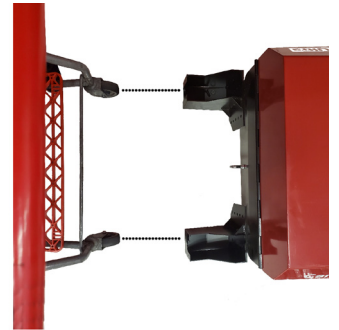
Unscrew the four cart cradle bolts and washers from the lower front of the CartManager Ultra and set them aside.

20

Set the cart cradles with the metal flanges pointing towards each other in front of the CartManager Ultra.

Set a shopping cart in front of the CartManager Ultra and align the cart cradles so that the notch in the front of the cradles matches the width of the rear wheels of the shopping cart. Note which of the rows of bolt holes on the front of the CartManager Ultra most closely align with the holes in the cradles. Next, lift the cradles so that the bottoms are high enough to clear any speed bumps the CartManager Ultra may encounter (usually 2"-4", 5-10 cm).

20

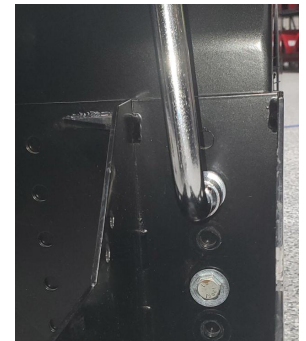


21

Once the position of the cradles is determined, attach the cart cradles using two bolts for each cart cradle, as shown in the diagram using a washer on each bolt.

Tighten to ensure that all the cradle bolts are snug.

21



22

Make sure to read the CartManager Ultra User Manual before using the CartManager Ultra for cart retrieval.

22



Troubleshooting

Problem	Solution
No power—Strobe light doesn't flash and battery level display LED light doesn't turn on.	<ul style="list-style-type: none"> • Press Green Switch on remote. • Unbolt neck and verify connector was correctly connected. • If the problem cannot be resolved, contact your local or store authorized service provider for service.
CartManager Ultra will not roll forward by pushing (Power turned OFF).	Release the brake by pulling the brake release lever out.
CartManager Ultra won't move forward under its own power.	<ul style="list-style-type: none"> • Verify charge cord is not plugged in (CartManager Ultra will not move when charging). • Press green button on remote to wake up. • Turn power ON and OFF and back ON (power switch).
Error codes	Refer to CartManager Ultra User Guide to resolve. If the problem cannot be resolved, contact local or store authorized service provider for service.

Safety

1. The CartManager Ultra is designed to move carts. Any other use of the CartManager Ultra is prohibited and improper usage and operation of the CartManager Ultra may result in personal injury and/or death and void the warranty.
2. Only one operator should operate the CartManager Ultra either by using the wireless Remote or using the Manual Throttle knobs. While using the throttle knob the Remote must be kept in the remote holder on the CartManager Ultra.
3. Remote acts as a wireless key and must not be left on the unit unattended. Operator must take it with them when they walk away from the CartManager Ultra.
4. You must be at least 16 years old to operate CartManager Ultra and follow applicable licensing laws for the city, county or state in which CartManager Ultra is being operated.
5. Do not operate the CartManager Ultra unless you meet the minimum operator requirements set down by federal and state regulations and corporate policy.
6. Do not operate the CartManager Ultra unless you have reviewed and understood the training materials provided by your employer.
7. A strap holding the string of carts together must always be used.
8. Do not use CartManager Ultra under the influence of drugs or any medications.
9. Do not use when distracted or using other devices such as a cell phone.
10. Do not operate or transport CartManager Ultra with the hood in the up position.
11. Do not use on street with high speed traffic.
12. Do not walk directly in front of the CartManager Ultra or carts being pushed.
13. Do not use on steep gradients.
14. Do not ride on or carry passengers on the CartManager Ultra.
15. Not appropriate for rain or snow unless rain/snow tires are used. Do not store where rain and/or snow may accumulate on the CartManager Ultra. The CartManager Ultra is designed for light exposure to water. Do not use in extreme weather, deep puddles where submergence is possible or pressure wash.
16. Do not push the CartManager Ultra when it is operating.
17. Do not leave the CartManager Ultra unattended while it is turned ON. The CartManager Ultra is equipped with a brake that automatically engages when the machine is stopped. To avoid an accident, do not leave the machine parked or unattended on slopes. When the CartManager Ultra is to be left unattended or in storage, turn the power switch OFF.
18. Operate the CartManager Ultra at a safe speed and go only as fast as safety considerations allow. Take into consideration the location of store entrances, sidewalks, pedestrian and vehicle traffic, driveways, and parking lot layout.
19. Always operate at a slow speed when near store guests or employees. Operating conditions, such as wet or slippery pavement or slopes can affect the stopping distance of the CartManager Ultra.
20. Do not drive over curbs and avoid rough surface conditions such as potholes.
21. Always be aware of your surroundings before you operate the CartManager Ultra in forward or reverse.
22. Only trained and authorized personnel are permitted to service the CartManager Ultra.

Charging

1. Hydrogen gas is formed when charging the batteries. Use a location with adequate ventilation when charging CartManager Ultra batteries. Never smoke near batteries. Do not charge batteries in an area with open flame or where there is electrical equipment that could cause an electrical arc.
2. AGM batteries have no free liquid and do not require maintenance.
3. Only use batteries approved by Gatekeeper for use in the Cartmanager Ultra.
4. Do not lay metal objects (wrenches, screwdrivers, etc.) on any of the batteries to prevent electrical short circuits.
5. The electrolyte in a storage battery is an acid, which can cause severe burns to the skin and eyes. Wear appropriate protective clothing when working with batteries. Treat all electrolyte spills with an extended flushing with clear water. Contact a physician immediately if contact is made with battery acid.
6. Do not use extension cords. Use the cord supplied with the machine. Find a location for recharging that is close to an electrical outlet receptacle.
7. The built in battery charger supplied with CartManager Ultra shall be grounded while in use to protect the operator from electric shock. Make sure the charger is connected to an outlet having the same configuration as the three prong grounded plug. No adapters (three to two pronged plugs that are not properly grounded) should be used with this charger.

Contact

USA

Gatekeeper Systems, Inc.
90 Icon
Foothill Ranch, CA 92610
customerexperience@gatekeepersystems.com
Tel: + (1) 949.453.1940
Toll-free: + (1) 888.808.9433

Canada

canada@gatekeepersystems.com
Tel: + (1) 416.798.8719
Toll-free: + (1) 888.525.3564

Australia

customerserviceau@gatekeepersystems.com
Tel: +61 (1) 300.821.119

UK

uk@gatekeepersystems.com
Tel: +44 (0) 1908.827.333

Europe

info@gks-eu.com
Tel: +49 (0) 7161.290.0818



Use this QR Code to access the latest copy of this and other CartManager Ultra Documents.

gatekeepersystems.com/cmultradocs



gatekeepersystems.com

